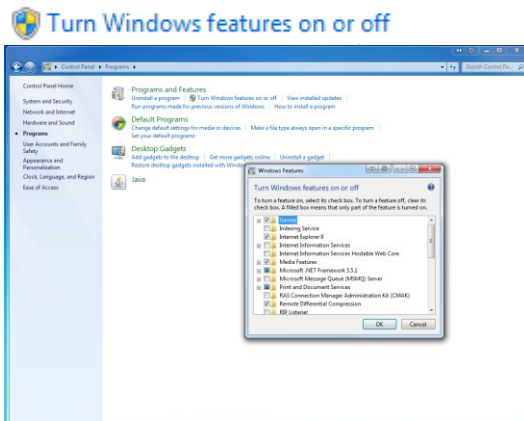


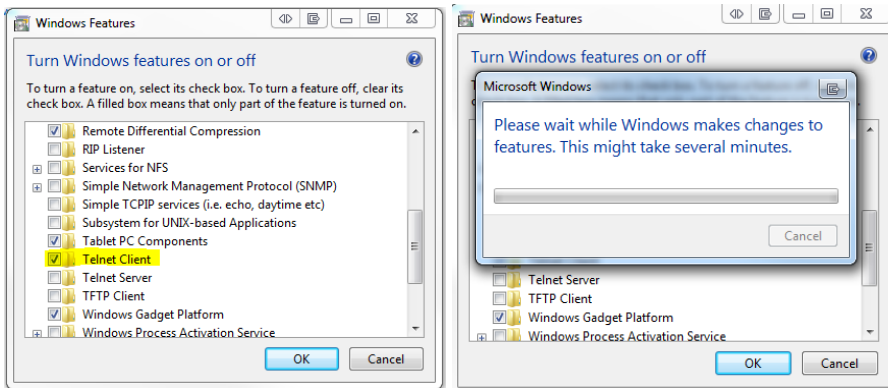
How to disable SIP ALG for AT&T Netopia

Install and run Telnet to change the SIP ALG for AT&T Netopia 'Caiman 3346' Routers or same series and turn the QoS for the SIP Devices

Windows 7, Go to control panel, Programs, Turn Windows Features



Add 'Telnet Client'



After Telnet finalize installing, from the Start button type: telnet 192.168.1.254



This IP is the default from this router, please used the correct gateway IP. 'Keep the space between the word telnet and the IP number'

Telnet 192.168.1.254 (You need Telnet client to be installed in your computer as instructed before)

```
1 Trying 192.168.1.254...
2 Connected to 192.168.1.254.
3 Escape character is '^]'.
4 login: admin
5 Password:
```

Once you are successfully logged in, you should see something like this:

```
1 Terminal shell v1.0
2 Copyright ©2008 Motorola, Inc. All rights reserved.
3 Netopia Model 3347-02 AnnexA High-Power Wireless DSL Ethernet Managed
4 Switch
5 Running Netopia SOC OS version 7.8.1 (build r2)
6 Multimode ADSL Capable
7 (admin completed login: Full Read/Write access)
8 Netopia-3000/155543380192>
```

At this prompt, type "config" (without quotes) and press ENTER.

This will place you into configuration mode. At the config prompt, type "set ip sip-passthrough off" and press ENTER again.

You will then see another config prompt (with no real confirmation of the command you executed -- don't worry, it did.)

Now type "quit" and press ENTER.

You'll be prompted as to whether or not you'd like to save the configuration, of course press "y" then ENTER.

This saves the settings and returns you to the regular command prompt of the router.

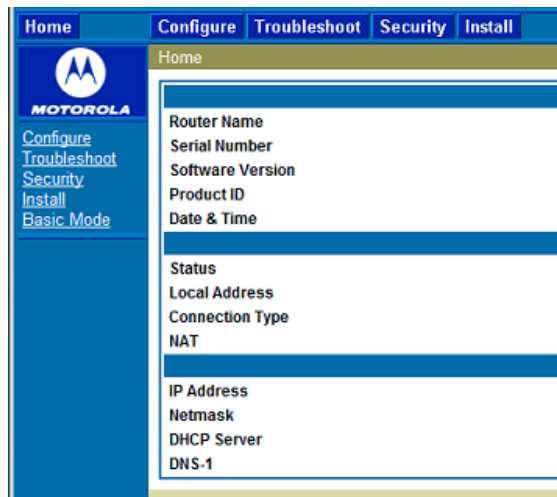
The whole operation should look a bit like this:

```
1 Netopia-3000/155543380192> config
2 Config Mode v1.3
3 Netopia-3000/155543380192 (top)>> set ip sip-passthrough
4 off
5 Netopia-3000/155543380192 (top)>> quit
6 Save modified configuration data? [n|y]: y
```

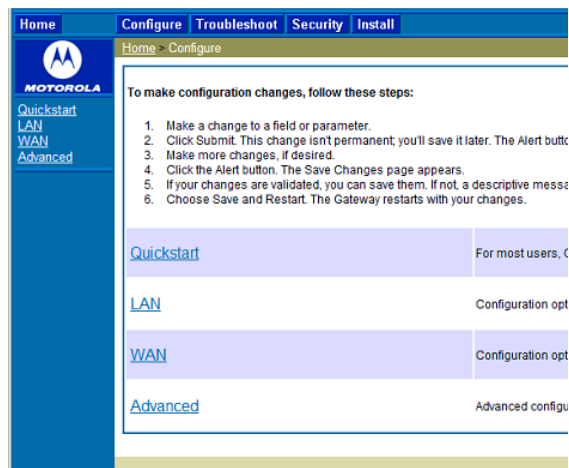
```
9 Configuration data saved.
10 Netopia-3000/155543380192>
```

At this point, you will need to restart the router in order for your changes to take effect. You can do so using the "restart" command, via the web interface, or by power-cycling.

Login back to the router using the web interface using any internet browser, type the IP of the router on the address line in this example '192.168.1.254' (without quotes)



Click on 'ADVANCE'



Click on 'Differentiated Services'

Network Configuration	
IP Static Routes	Build IP static route table
IP Static ARP	Build IP static ARP table
NAT	
Pinholes	Set up pinholes through NAT
IPMaps	Set up NAT one-to-one IP address mappings
Default Server	Set up NAT default server options
NAT Table Monitoring	Set up NAT Table Monitoring options
Services	
Differentiated Services	Set up Differentiated Service options
DNS	Set up DNS options

Check mark 'Enable' and 'Submit'

Differentiated Services	
Enable	<input checked="" type="checkbox"/>
Low-High Priority Ratio (1-100)	92
<input type="button" value="Submit"/>	

Custom Flows will take effect after you Enable Differentiated Services, Save, and Restart.
To create a new Custom Flow entry, press the "Add" button.

Custom Flows	
No Custom Flow entries have been defined	
<input type="button" value="Add"/>	

The screen will change and the alert icon will show, please click on the 'Alert' Icon



Press 'Save and restart'

Save Database	
Save	Apply changes made to the database
Save and Restart	Apply changes and restart Gateway
Check Database	
Review	Review the contents of the database
Validate	Validate edited database
Revert Database	
Revert	Restore to settings before edits

Connect you SIP devices and wait until download the Provisioning files